

*Marine Fire
Suppression Systems*





Kidde Fire Systems' products save people and property from the dangers of fire. Founded by Walter Kidde in 1917, our broad product offering and design expertise have been protecting assets worldwide for nearly 100 years. We are the smart choice when early fire detection and suppression needs are especially demanding.

Today, Kidde Fire Systems incorporates Chemetron Fire Systems and Fenwal Protection Systems. Operating as one united company offers Kidde Fire Systems and its customers an important competitive advantages going forward. From refineries to mining vehicles to seafaring vessels... it's likely that Kidde Fire Systems products are on the job.

Kidde Fire Systems is a world leader in fire detection and suppression systems. We are a part of UTC Climate, Controls & Security – a business unit of United Technologies Corporation. The organization is a leading provider to the aerospace and building systems industries worldwide. Our products and services set the benchmark for fire detection and suppression.

Customers trust us for protection from everyday hazards because we are experts in our field. That trust is reinforced by the quality we instill in everything we do, from manufacturing fire and safety systems to providing system design and technical support.

1917



Pioneered the "LUX" siphon tube technology for CO₂ cylinders – which is still used today.



Walter Kidde and Company, Inc. was established in New Jersey.



Kidde® ECS™ Clean Agent Suppression System

Kidde ECS Clean Agent Suppression Systems are proven, effective and reliable fire suppression options for small, medium and large marine applications where crew or other occupants may be present.

- Allows flexibility in location of agent storage cylinders
- Compact design reduces weight and maximizes available installation space
- Choice of agent: 3M™ Novec™ 1230 Fluid or HFC-227ea

All ADS™ and ECS™ Clean Agents Offer:

- Fire suppression within seconds of discharge into protected area
- Electrically non-conductive – will not harm electronics
- No damage to the equipment or harm to personnel in the protected area
- No post-discharge residue to clean minimizes down-time

Kidde® ADS™ Clean Agent Suppression System

Same great features as the ECS™ plus... the Kidde ADS Clean Agent Suppression Systems are innovative fire suppression solutions developed to provide effective protection for larger shipboard enclosures requiring longer agent flow distances.

- System uses our patented “piston flow” technology that delivers greater mass flow rates than standard clean agent system
- Protects larger hazard areas with smaller pipe sizes and longer pipe runs, in complex configurations
- Best in class hazard area height, nozzle coverage and distance from the cylinder bank to the hazard area
- Now offering choice of agent: 3M™ Novec™ 1230 Fluid or HFC-227ea



UL issued their first official approval of the Kidde® LUX System for yachts. Developed fire protection for airplane engines in cooperation with the U.S. Navy.

First to work with U.S. Army Corps of Engineers on Halon 1301 suppression. Acquired several fire protection technologies – becoming a global fire protection manufacturer.



First installation of a Kidde® Clean Agent Fire Suppression System onboard U.S. Naval vessel.

Kidde® Carbon Dioxide Suppression System

Kidde Fire Systems offers marine approved Carbon Dioxide (CO₂) suppression systems. An effective proven standard in worldwide vessel protection.

- Electrically non-conductive gas
- Carbon Dioxide rapidly suppresses fire by cooling and oxygen displacement
- Economical to install and recharge
- Carbon Dioxide is readily available
- Kidde CO₂ systems are available in High- or Low-Pressure designs



Listing and Approvals:

- UL Listed
- ABS Type Approval
- DNV-GL Type Approval

Kidde® WHDR™ Wet Chemical Suppression System for Galleys

The Kidde WHDR wet chemical system offers superior 24-hour fire protection for galley cooking appliances, as well as associated ventilation equipment – safeguarding crew and minimizing damage in the event of a fire.

- Fast, integrated detection
- Quick flame knockdown
- Prevents re-flash in protected galley areas
- Operates in temperatures ranging from 0°F to 120°F (-18°C to 49°C)
- Cost-effective design minimizes down-time for recharge and periodic service

Introduced FM-200™ and 3M™ Novec™ 1230 Fluid to fire protection market. Developed ADST™ System with Piston Flow.



Innovated our ADST™ Clean Agent System with 3M™ Novec™ 1230 Fluid.

Today

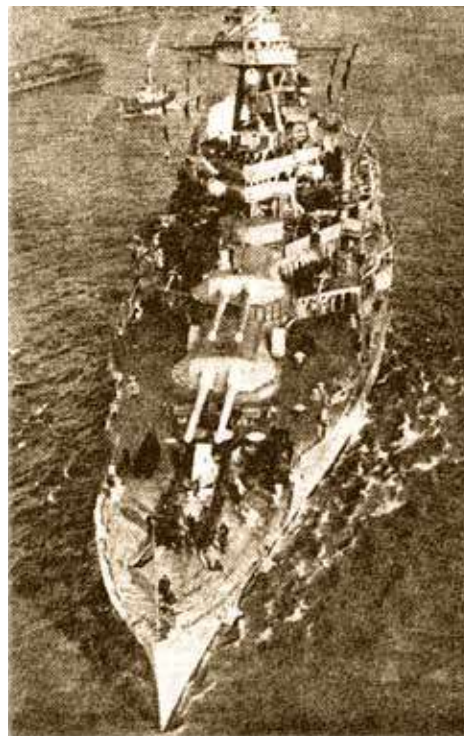
INNOVATORS IN FIRE PROTECTION FOR MORE THAN 90 YEARS

Kidde Fire Systems has been protecting ships at sea since World War I when it developed its first engineered fire suppression system to protect U.S. Naval vessels engaged in the war efforts. Today, we continue to be the leader in vessel protection. We understand the challenges you face and the importance of keeping your ship operational. Our fire suppression product solutions are fast acting to protect your crew, passengers and the vessel itself from the catastrophic dangers of an onboard fire.

VESSELS WITH FIRST RATE FIRE PROTECTION:



The Blue Orca has both a Kidde® ECS™ Clean Agent System with 3M™ Novec™ 1230 Fluid and a Kidde High-Pressure Carbon Dioxide System installed onboard. Our systems are protecting the Engine Room and Casing, Emergency Generator, Brake Frac Pump, Sand Silo and Generator Rooms.



The U.S.S. Texas carries a built-in Kidde® fire fighting system to guard paint and flammable liquid stores. A hose reel system protects machinery spaces and some 150 15 lb. portables are placed strategically throughout the vessel.*

*Excerpt from a Kidde Industry newsletter published circa 1944.

WE PROTECT A VARIETY OF AREAS ONBOARD VESSELS TRAVELING AROUND THE GLOBE:

Engine Rooms • Paint Lockers • Switchgear Spaces
Control Rooms • Cargo Spaces • Galleys
Lube Oil Rooms • Thruster Rooms • Machinery Rooms

THE VALUE OF PROFESSIONAL DISTRIBUTION

The global network of “Kidde Authorized” Fire Protection Distributors possess the knowledge and qualifications required to be known as “professionals” in the fire protection industry. All authorized Kidde Distributors are factory-certified in the design, installation and maintenance of Kidde products. This ensures that they are knowledgeable about codes and standards in all the markets we serve. As a result, the system you get is the most economical and viable solution to satisfy your fire protection requirements.

The Kidde Fire Systems network of Authorized Distributors offers the following services:

ASSET HAZARD ANALYSIS

From your engine room to the galley, our global network of distributors have the right experience and tools to conduct a professional analysis of your assets and processes to develop the most appropriate fire protection solution.

SYSTEM DESIGN AND TECHNICAL SUPPORT

Our distributors are trained to design custom fire protection solutions using proprietary Kidde software that meet applicable codes and standards. We also provide an Applications Engineering team to assist our distributors with system design whenever necessary.

INSTALLATION

Our distributors provide timely installation of Kidde detection, control and suppression systems. By being flexible to your needs, our distributors will complete their work with the least possible interruption to your business operations.

MAINTENANCE AND EMERGENCY SERVICES

Kidde distributors offer the full spectrum of important post-installation services, ranging from code-compliant testing and maintenance to 24-hour emergency service.



Approvals & Listings:



 **Kidde
Fire Systems**

Kidde Fire Systems
400 Main Street, Ashland, MA 01721 USA

Kidde is a registered trademark of Kidde-Fenwal, Inc., or its parents, subsidiaries or affiliates.

3M and Novec are trademarks of 3M Company. FM-200 is a trademark of Chemours.

BR-801 | Dec. 2016 | © Kidde-Fenwal, Inc. All rights reserved.

INFORMASI PEMESANAN



<https://reedfox.id>
0813-1111-0220

ReedFOX

- Pemasangan sistem baru
- Penggantian spareparts
- Inspeksi, service, dan maintenance
- Refilling extinguishing agent