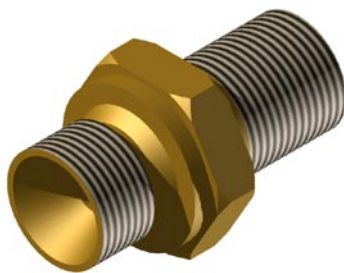


Male Adaptors

This adaptor (309.013.005) connects the pilot hose to the 25 mm (1") and 50 mm (2") container valve assembly. The male adaptor (309.013.006) connects to the 80 mm (3") container valve assembly and also to the pressure switch.

Figure 24 - Male Adaptor



Technical Information

Material:	Steel 230 M07 Pb
Connection:	1/4" BSPP x 1/4" BSPT (Part No. 309.013.005) 1/4" BSPP x 1/4" NPT (Part No. 309.013.006)
Max. Working Pressure:	350 bar (5076 psi)
Overall Size:	34mm (L) x 19mm (W) (1.35" (L) x 0.75" (W))
Weight:	0.034 kg (0.08 lbs)

Male Pilot Hose Connector

The male pilot hose connector is used to connect two pilot hoses together for systems where a second container of a different size is used to protect a different enclosure. For example: a large container is protecting a room and a separate smaller container protects the subfloor, and both containers are to actuate simultaneously, and a hose longer than Part No. 306.205.003 is required.

Figure 25 - Male Pilot Hose Connector (Part No. 309.013.007)



Technical Information

Material:	Steel 230 M07 Pb
Connection:	1/4" BSPP x 1/4" BSPP
Max. Working Pressure:	350 bar (5076 psi)
Overall Size:	30mm (L) x 19mm (W) (1.18" (L) x 0.75" (W))
Weight:	0.034 kg (0.08 lbs)