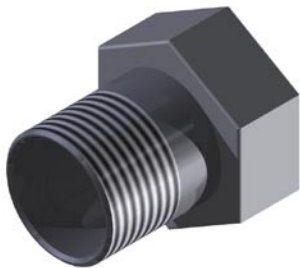


SECTION 2 - SYSTEM COMPONENTS**80 mm (3") Valve Single Tank Adaptors**

When a single 343 litre container is being used without a manifold, three swivel adaptors are available for connection to the discharge outlet, either NPT, BSP or grooved.

Figure 17 - 80mm (3") Valve Single Tank Adaptor

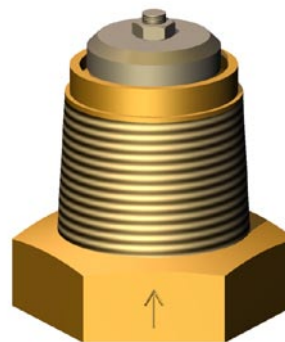


3" Flared to 3" BSPT	Part No. 309.002.013
3" Flared to 3" NPT	Part No. 309.002.014
3" Flared to 3" Grooved	Part No. 309.002.015

Manifold Check Valve

Manifold check valves are of mushroom pattern type and lift into the manifold as discharge occurs. The function of the check valve is to prevent loss of extinguishing agent during discharge from an outlet, should a container have been removed. All check valves are ordered separately to the manifold assembly.

Figure 18 - Manifold Check Valve



25 mm (1") Check Valve Assembly
Part No. 302.209.004

50 mm (2") Check Valve Assembly
Part No. 302.209.005

Technical Information

Body: Cadmium plated mild steel

3" Flared to 3" BSPT

Overall Size: 115mm (L) x 102mm (W)
(4.51" (L) x 4.00" (W))
Weight: 2.84 kg (6.27 lbs)
Equivalent Length: 0.55m (1.8 ft)

3" Flared to 3" NPT

Overall Size: 115mm (L) x 102mm (W)
(4.51" (L) x 4.00" (W))
Weight: 2.84 kg (6.27 lbs)
Equivalent Length: 0.55m (1.8 ft)

3" Flared to 3" Grooved

Overall Size: 72mm (L) x 102mm (W)
(2.82" (L) x 4.00" (W))
Weight: 1.95 kg (4.30 lbs)
Equivalent Length: 0.55m (1.8 ft)

Technical Information

Body: Brass CZ122
Stem: Stainless Steel
Spring: Stainless Steel
Bottom Plate: Brass CZ122
Top Plate: Stainless Steel
Seal Material: Nitrile

25 mm (1") Check Valve

Inlet Connection Thread: 25 mm (1" NPT) Female
Outlet Connection Thread: 40 mm (1½" NPT) Male
Overall Size: 54mm (L) x 52.4mm (W)
(2.13" (L) x 2.06" (W))
Weight: 0.63 kg (1.39 lbs)
Equivalent Length: 0.40m (1.3 ft)

50 mm (2") Check Valve

Inlet Connection Thread: 50 mm (2" NPT) Female
Outlet Connection Thread: 65 mm (2½" NPT) Male
Overall Size: 73mm (L) x 83mm (W)
(2.87" (L) x 3.25" (W))
Weight: 1.60 kg (3.53 lbs)
Equivalent Length: 6.66m (21.8 ft)