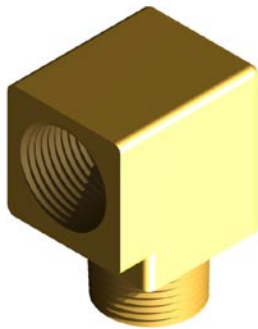


SECTION 2 - SYSTEM COMPONENTS

Street Elbow

This elbow can be used to connect a pilot hose to an 80 mm (3") valve. The street elbow's 1/4" NPT male thread screws into the valve body actuation port. The 1/4" NPT thread of the male adaptor (Part No. 309.013.006) screws into the street elbow. The flexible pilot hose (Part No. 306.205.003) would then screw onto the male adaptor.

Figure 26 - Street Elbow (Part No. 309.013.008)



Technical Information

Material:	Brass
Connection:	1/4" NPT x 1/4" NPT
Overall Size:	28mm (L) x 18mm (W) (1.10" (L) x 0.71" (W))
Weight:	0.042 kg (0.09 lbs)

Male Tee

This is used primarily in manifold systems for connecting pilot lines from one slave container to the next.

Figure 27 - Male Tee (Part No. 309.013.021)



Technical Information

Material:	Brass
Connection:	1/4" BSPP x 1/4" BSPP x 1/4" NPT
Max. Working Pressure:	450 bar (6527 psi)
Overall Size:	42mm (L) x 29mm (W) (1.65" (L) x 1.14" (W))
Weight:	0.075 kg (0.17 lbs)

Male Elbow

This elbow can be used on the last slave container when the pressure switch connection is taken from the manifold or piping networks.

Figure 28 - Male Elbow (Part No. 309.013.009)



Technical Information

Material:	Brass
Connection:	1/4" BSPP x 1/4" NPT
Max. Working Pressure:	450 bar (6527 psi)
Overall Size:	28mm (L) x 25mm (W) (1.10" (L) x 1.00 (W))
Weight:	0.050 kg (0.11 lbs)

Pressure Switch

The pressure switch is activated by pressure from the agent during discharge and can be used to signal to a control panel that the system has actually discharged. The pressure switch latches on operation and has a reset button. The pressure switch is supplied with a 1/4" BSPP x 1/4" NPT male adaptor (Part No. 309.013.006).

Figure 29 - Pressure Switch (Part No. 304.205.007)



Technical Information

Housing:	Die-cast Aluminium
Pressure Connection:	Nickel Plated Brass
Switch Point:	4 bar Rising (58 psi)
Tolerance:	± 0.34 bar (± 5 psi)
IP Rating:	IP65
Connection:	1/4" NPT Female
Conduit Thread:	1/2" NPT Female
Max. Working Pressure:	103.4 bar (1500 psi)
DC Switch Rating:	1A 24v dc
Installation Environment:	non-corrosive / indoor
Overall Size:	165mm (L) x 101mm (W) (6.50" (L) x 3.98 (W))
Weight:	1.22 kg (2.69 lbs)